



**Untitled Art Miami Beach**

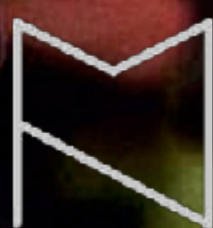
November 29 - December 3, 2022

**MARISA NEWMAN PROJECTS**

Booth A51

**UTA BEKAIA  
KHATIA ESARTIA  
ADLER GUERRIER  
LEVANI (Levan Mindiashvili)  
SUSANA WALD  
CHARLOTTA WESTERGREN**

Poetry reading / Performance by  
**LUCAS DE LIMA**



# **Untitled Art Miami Beach**

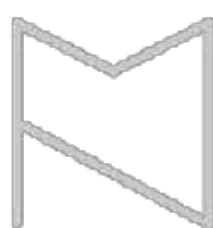
November 29 - December 3, 2022

## **MARISA NEWMAN PROJECTS**

Booth A51

**UTA BEKAIA  
KHATIA ESARTIA  
ADLER GUERRIER  
LEVANI (Levan Mindiashvili)  
SUSANA WALD  
CHARLOTTA WESTERGREN**

Poetry reading / Performance by  
**LUCAS DE LIMA**





## UTA BEKAIA

(Born and based Tbilisi, Georgia)



# MARISA NEWMAN PROJECTS



## **Uta Bekaia**

Ruby Star Children

2022

Velvet, embroidery, rhinestones, stuffing, steel armature, gold plated and glazed ceramic.

Three parts, clockwise from left:

13 x 10.5 x 11 inches, 15 x 15.5 x 12 inches,

4 x 13.5 x 11.5 inches



**Uta Bekaia**

Ruby Star Children (detail).



**Uta Bekaia**

Ruby Star Children (detail).



**Uta Bekaia**  
Ruby Star Children (detail).

# MARISA NEWMAN PROJECTS



## **Uta Bekaia**

Sapphire Star Children

2022

Velvet, embroidery, rhinestones, stuffing, steel armature, gold plated and glazed ceramic.

Three parts, clockwise from left:

13 x 10.5 x 11 inches, 15 x 15.5 x 12 inches,

4 x 13.5 x 11.5 inches





**Uta Bekaia**

Sapphire Star Children (detail).



**Uta Bekaia**

Sapphire Star Children (detail).



**Uta Bekaia**

Sapphire Star Children

2022

(Detail)



**Uta Bekaia**

Great Creatures from Safe Spaces, No.1

2021

Faux fur, velvet, embroidery, rhinestones, stuffing, steel armature

22 x 21 x 15 inches



**Uta Bekaia**

Great Creatures from Safe Spaces, No.1



**Uta Bekaia**

Great Creatures from Safe Spaces, No.1



Uta Bekaia

Great Creatures from Safe Spaces, No.1



**Uta Bekaia**

Great Creatures from Safe Spaces, No.2

2021

Faux fur, velvet, embroidery, rhinestones, stuffing, steel armature

22 x 21 x 15 inches





**Uta Bekaia**

Great Creatures from Safe Spaces, No.2

# MARISA NEWMAN PROJECTS



## **Uta Bekaia**

Great Creatures from Safe Spaces, No.2 (detail)

2021

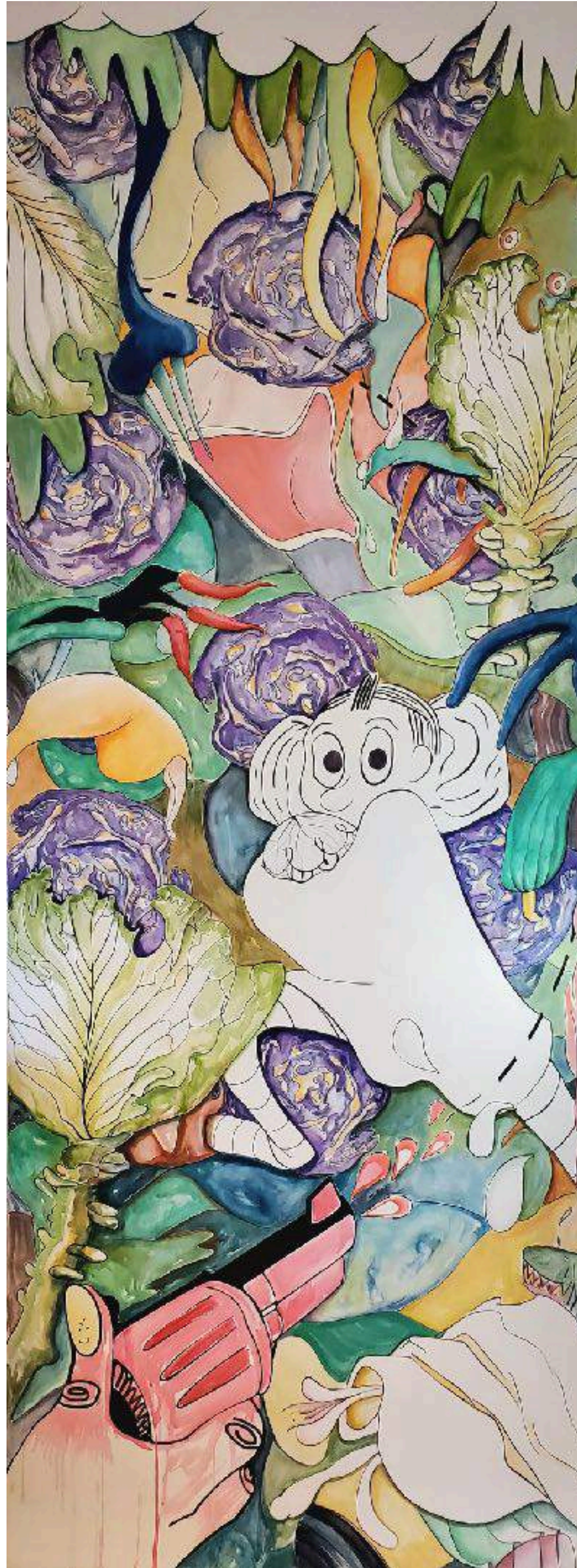
Faux fur, velvet, embroidery, rhinestones, stuffing, steel armature

19 x 17 x 17 inches



**KHATIA ESARTIA**

(b. Gaga, Georgia - Brooklyn, NY)



**Khatia Esartia**

Punt It (Garden of Oppression)

2022

Watercolor, gouache on woven wallpaper

96 x 36 inches



Khatia Esartia

Punt It (Garden of Oppression) detail



**Khatia Esartia**

Untitled

2022

Watercolor and gouache on mylar

14 x 11 inches



**Khatia Esartia**  
Untitled (detail).

# MARISA NEWMAN PROJECTS



**Khatia Esartia**

Let's Try *That* Again

2022

Oil on wood panel

36 x 24 inches





Khatia Esartia  
Let's Try *That* Again (detail).

# MARISA NEWMAN PROJECTS



**Khatia Esartia**

Mort Non Naturel

2022

Watercolor and gouache on mylar

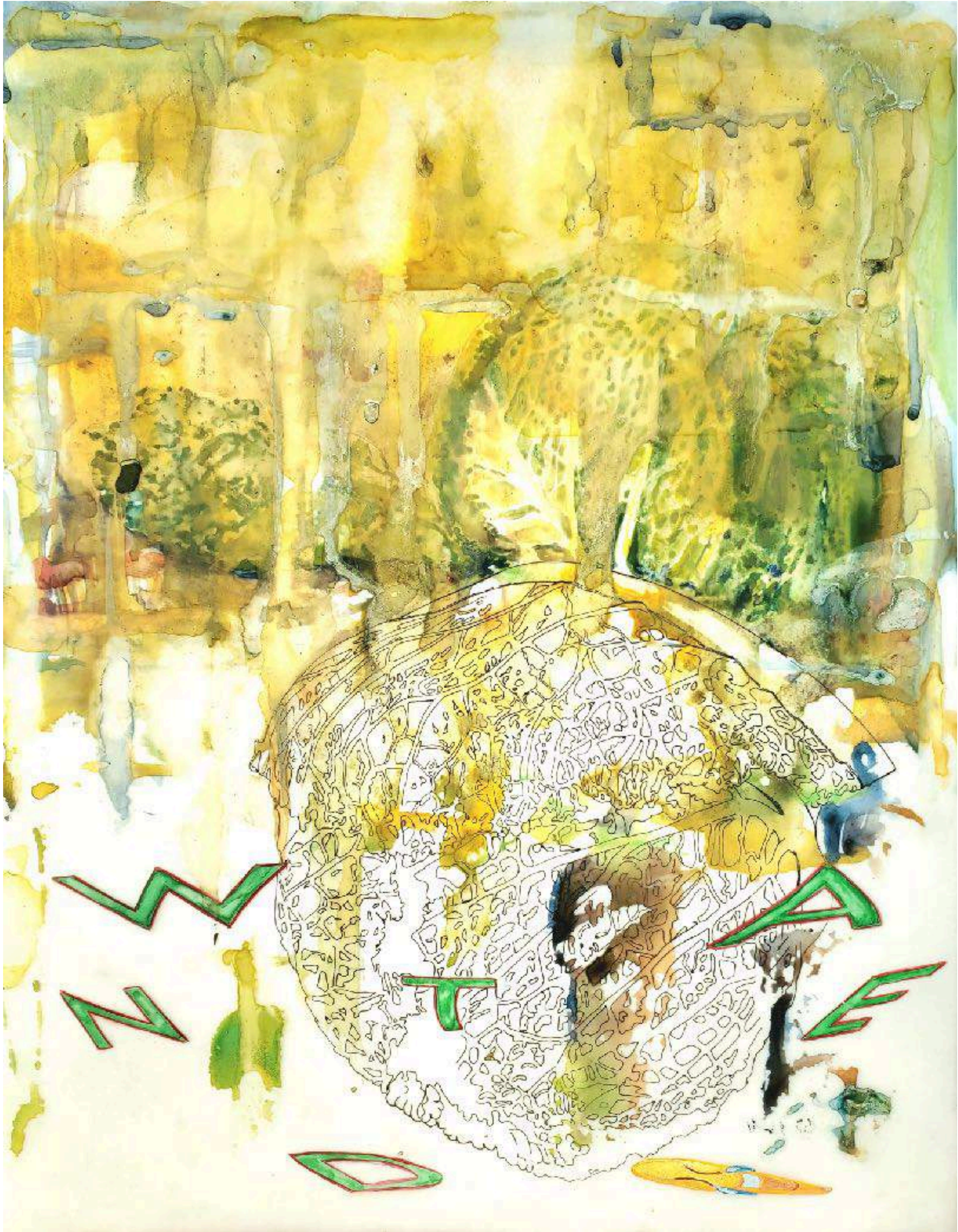
14 x 11 inches



**Khatia Esartia**

Mort Non Naturel (detail).

# MARISA NEWMAN PROJECTS



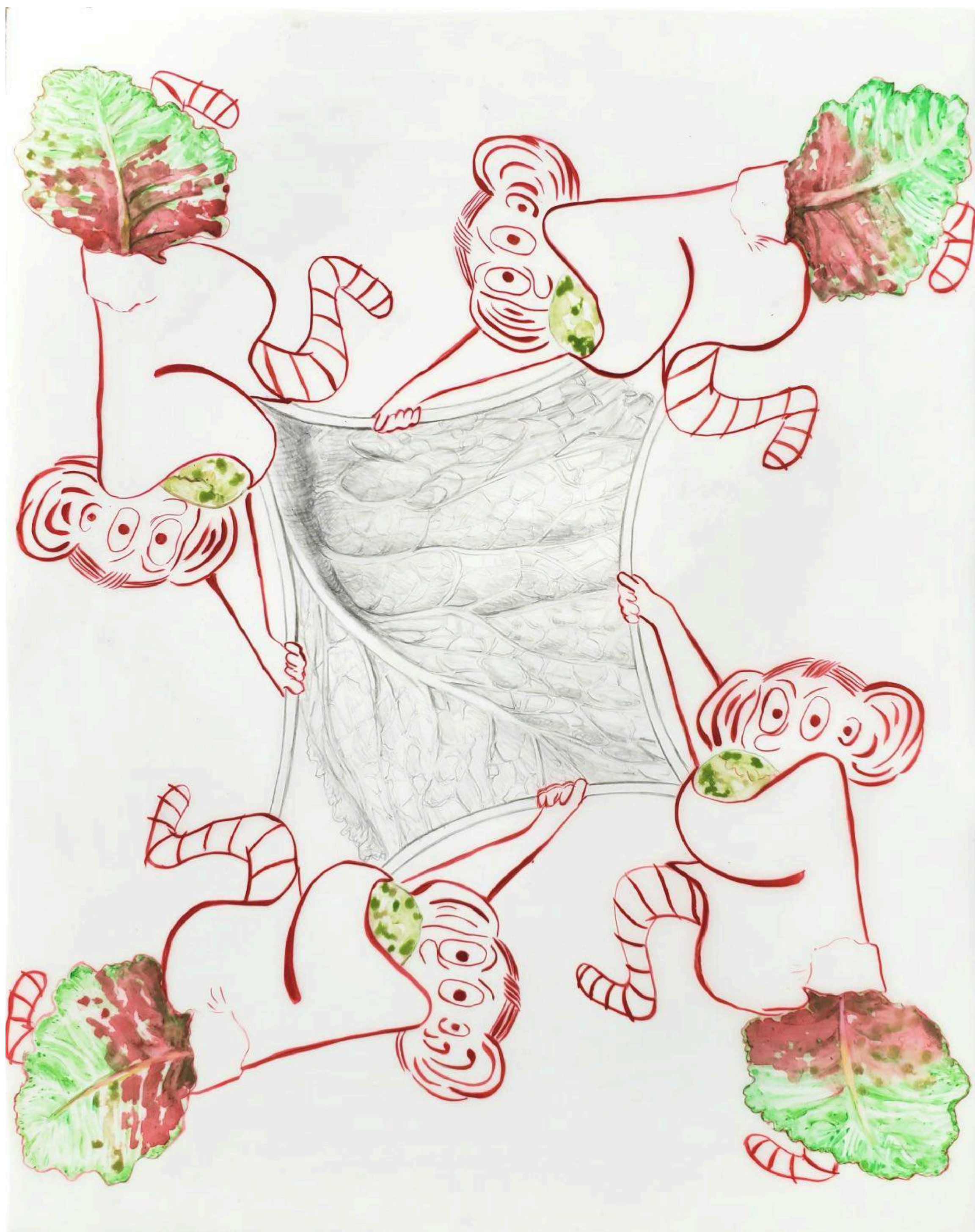
**Khatia Esartia**

Wanted

2022

Watercolor and gouache on mylar

14 x 11 inches



**Khatia Esartia**

Protect, Protect, Protect, Protect

2022

Watercolor and gouache on mylar

14 x 11 inches



**Khatia Esartia**

PR

2022

Watercolor and gouache on mylar

14 x 11 inches



**Khatia Esartia**

Untitled (link to color through jazz)

2022

Watercolor and gouache on mylar

14 x 11 inches



**Khatia Esartia**

Untitled

2022

Watercolor and gouache on mylar

14 x 11 inches





**Khatia Esartia**

Jazz Break in Midst of Melancholy

2022

Watercolor and gouache on mylar

14 x 11 inches

The image is a vertical collage of botanical elements. On the left side, there are several green leaves of varying shades and sizes, some with small white flowers. On the right side, there are several ripe oranges, some with green leaves. In the center, there is a large, white, starburst-shaped cutout. A vertical line runs down the center of the image, passing through the starburst. The background is a dark, textured pattern of green leaves and oranges.

# ADLER GUERRIER

(b. Port-Au-Prince, Haiti - based Miami, FL)



**Adler Guerrier**

Untitled (At the still point of mottled formations and a scruple of compassion) iv

2022

Archival pigment print, Edition of 5 +1 A/P

15 x 10 inches



**Adler Guerrier**

Untitled (At the still point of mottled formations and a scruple of compassion) v

2022

Archival pigment print, Edition of 5 +1 A/P

15 x 10 inches



**Adler Guerrier**

Untitled

2022

Archival pigment print, Edition of 5 +1 A/P

15 x 10 inches



**Adler Guerrier**

Untitled

2022

Archival pigment print, Edition of 5 +1 A/P

15 x 10 inches



Adler Guerrier  
Untitled (detail).



**Adler Guerrier**

Untitled

2022

Archival pigment print, Edition of 5 +1 A/P

15 x 10 inches





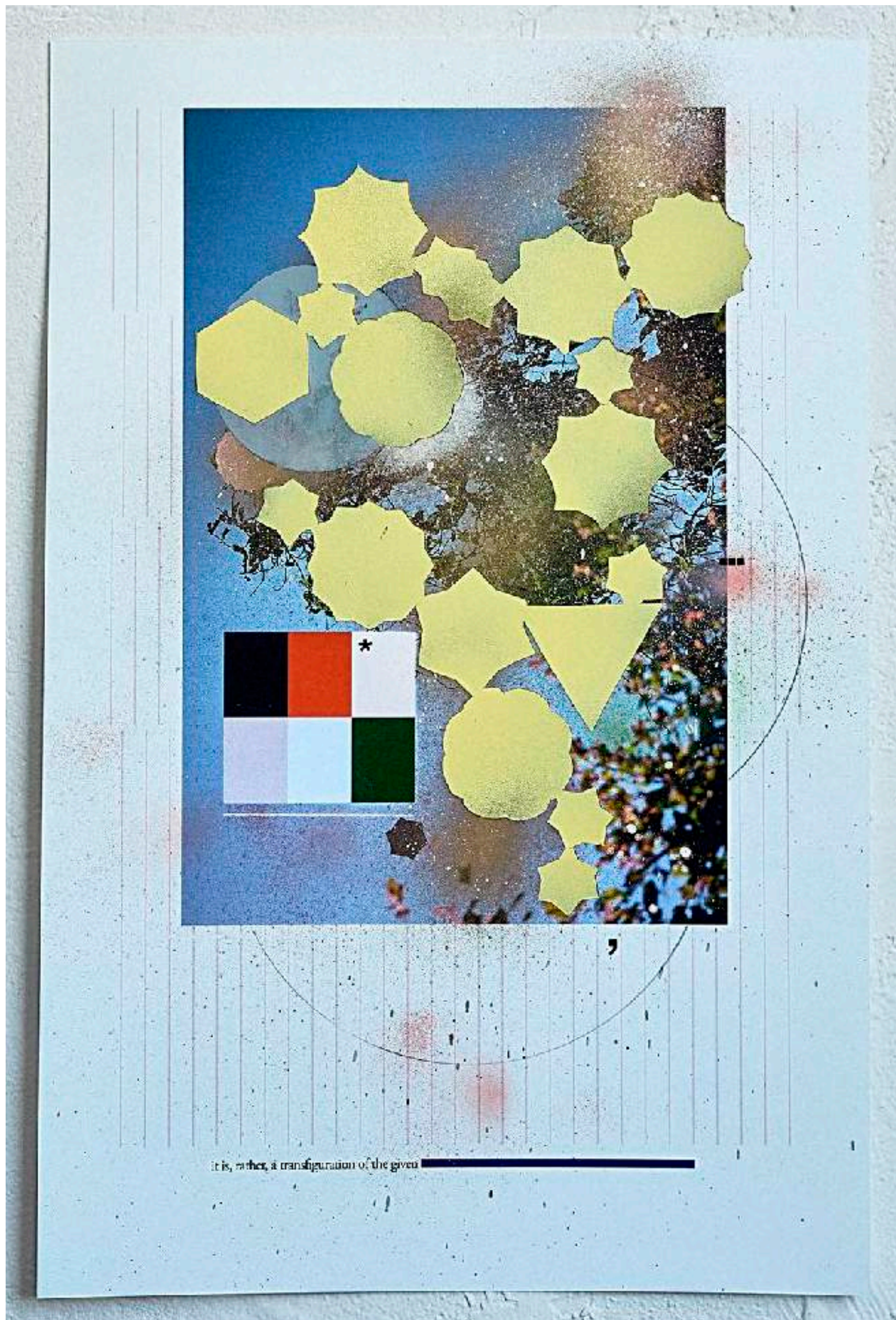
**Adler Guerrier**

Untitled

2022

Archival pigment print, Edition of 5 +1 A/P

15 x 10 inches



**Adler Guerrier**

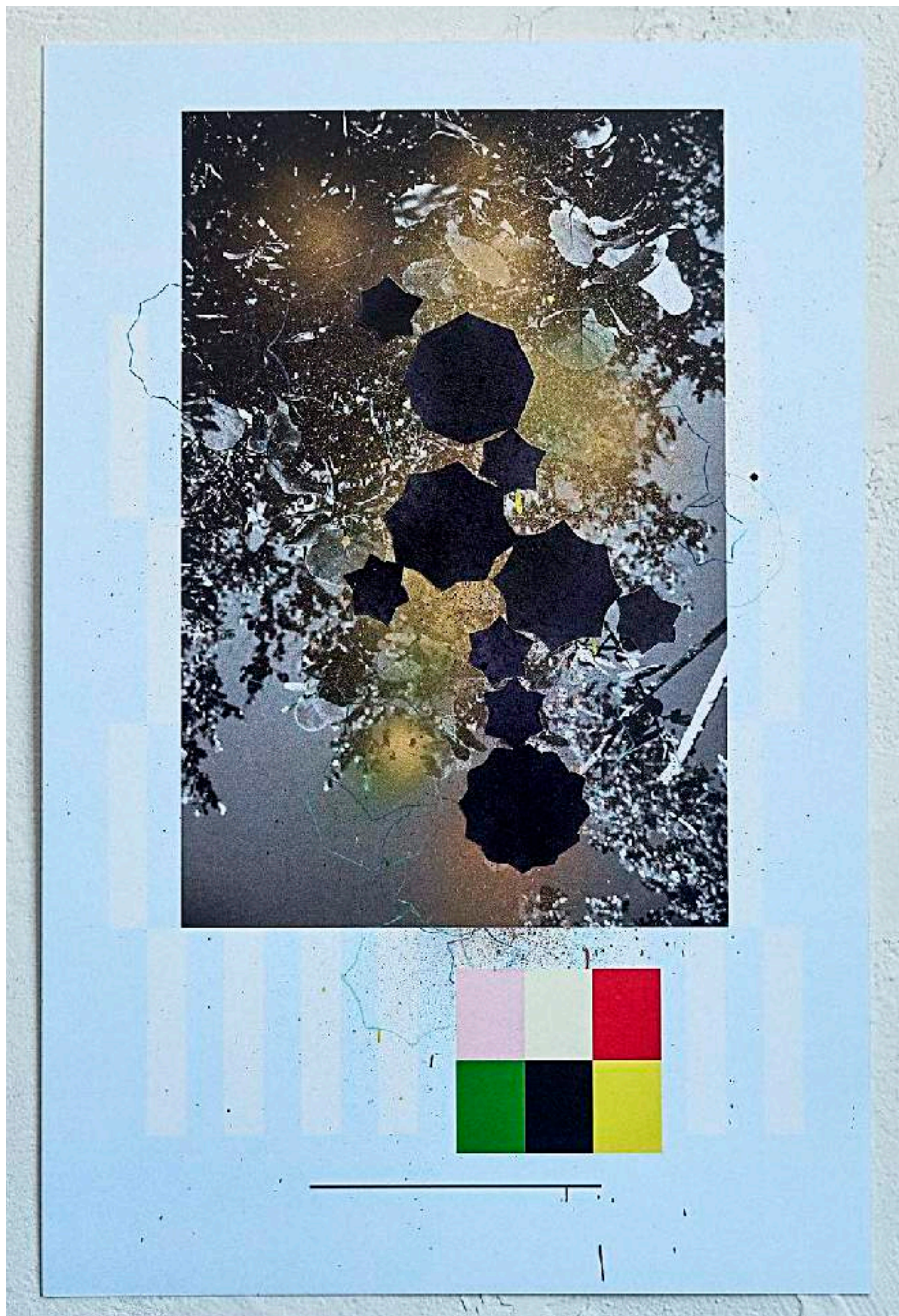
Untitled (Field Guide--exposure to enchanted forms) i

2022

Colored pencil, cut vinyl, enamel paint, and collage on a Xerox Versant 80 print on

Mohawk Superfine paper

18.5 x 12 inches



**Adler Guerrier**

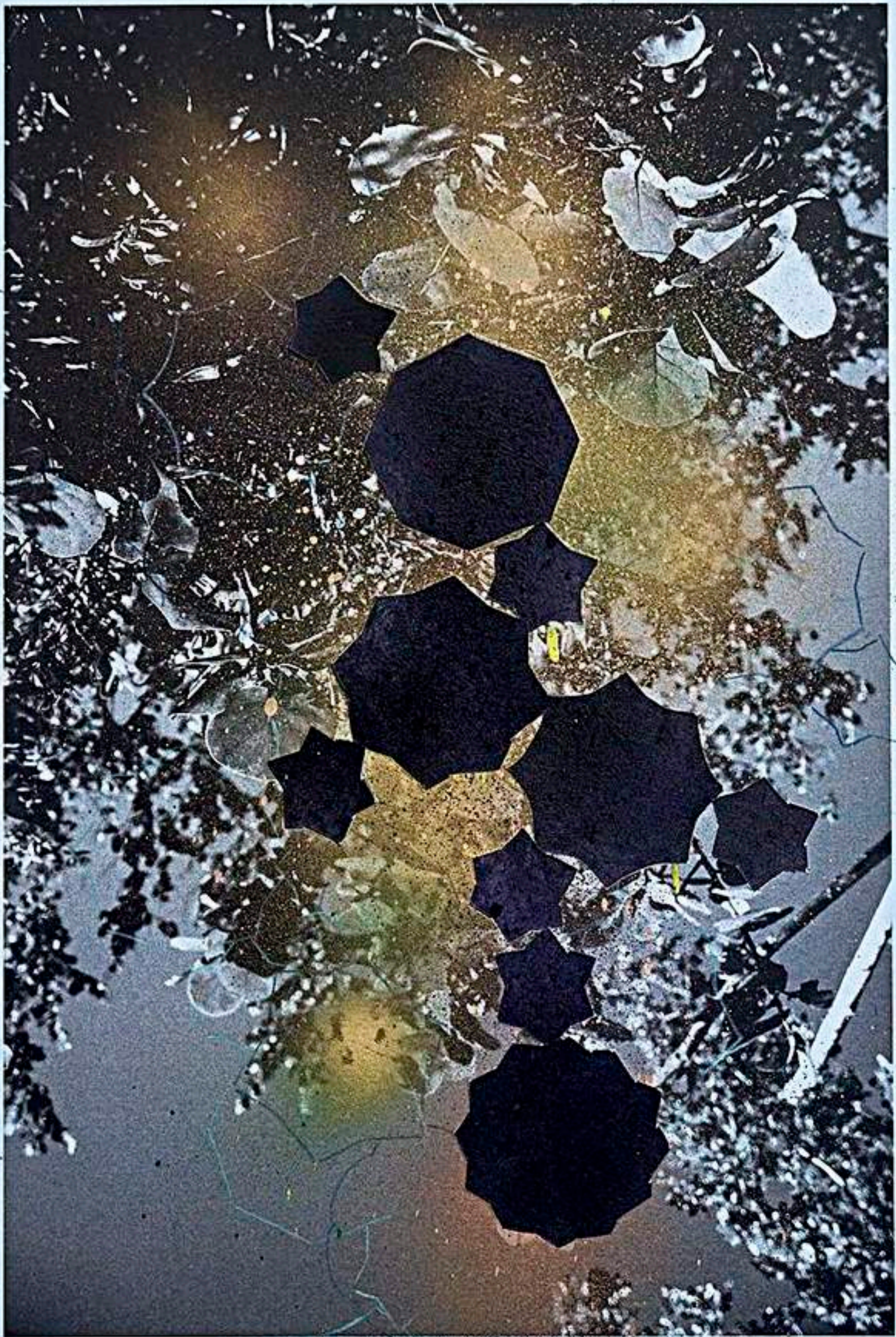
Untitled (Field Guide--exposure to enchanted forms) ii

2022

Colored pencil, cut vinyl, enamel paint, and collage on a Xerox Versant 80 print on

Mohawk Superfine paper

18.5 x 12 inches



**Adler Guerrier**

Untitled (Field Guide--exposure to enchanted forms) ii (detail)



**Adler Guerrier**

Untitled (Field Guide--exposure to enchanted forms) iii

2022

Colored pencil, cut vinyl, enamel paint, and collage on a Xerox Versant 80 print on

Mohawk Superfine paper

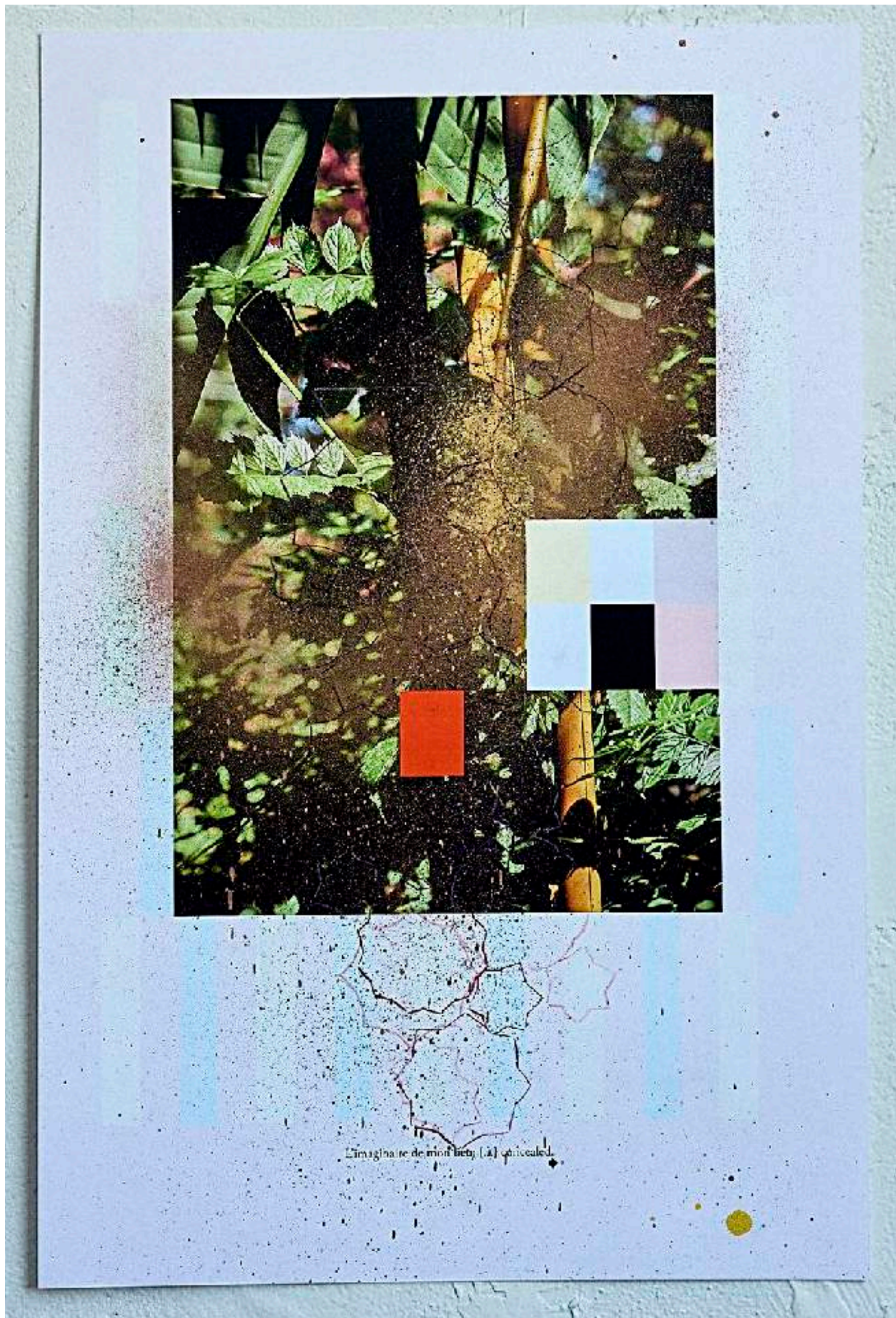
18.5 x 12 inches



**Adler Guerrier**

Untitled (Field Guide--exposure to enchanted forms) iv  
2022

Colored pencil, cut vinyl, enamel paint, and collage on a Xerox Versant 80 print on  
Mohawk Superfine paper  
18.5 x 12 inches



**Adler Guerrier**

Untitled (Field Guide--exposure to enchanted forms) v

2022

Colored pencil, cut vinyl, enamel paint, and collage on a Xerox Versant 80 print on

Mohawk Superfine paper

18.5 x 12 inches

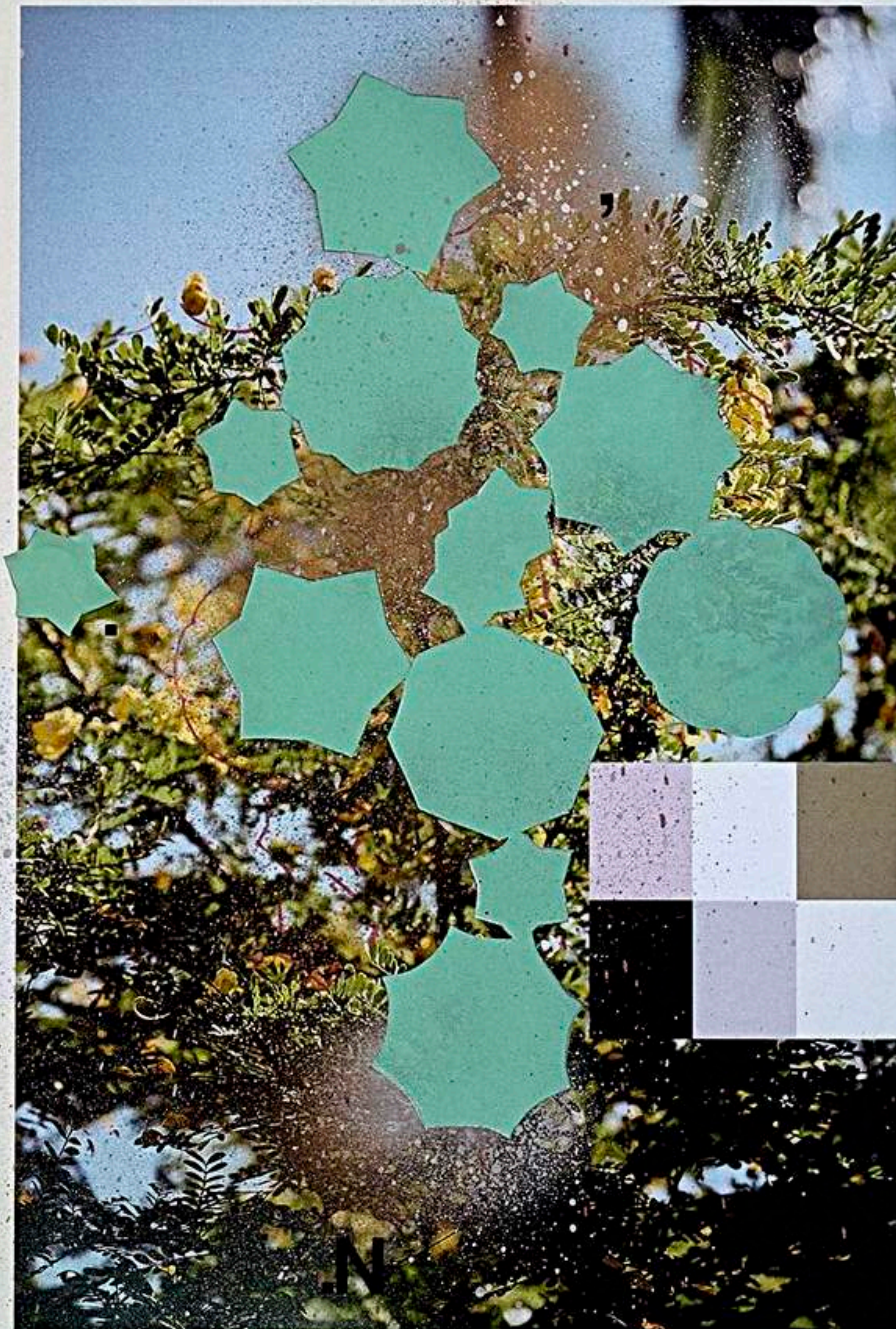


**Adler Guerrier**

Untitled (Field Guide--exposure to enchanted forms) vi  
2022

Colored pencil, cut vinyl, enamel paint, and collage on a Xerox Versant 80 print on  
Mohawk Superfine paper  
18.5 x 12 inches

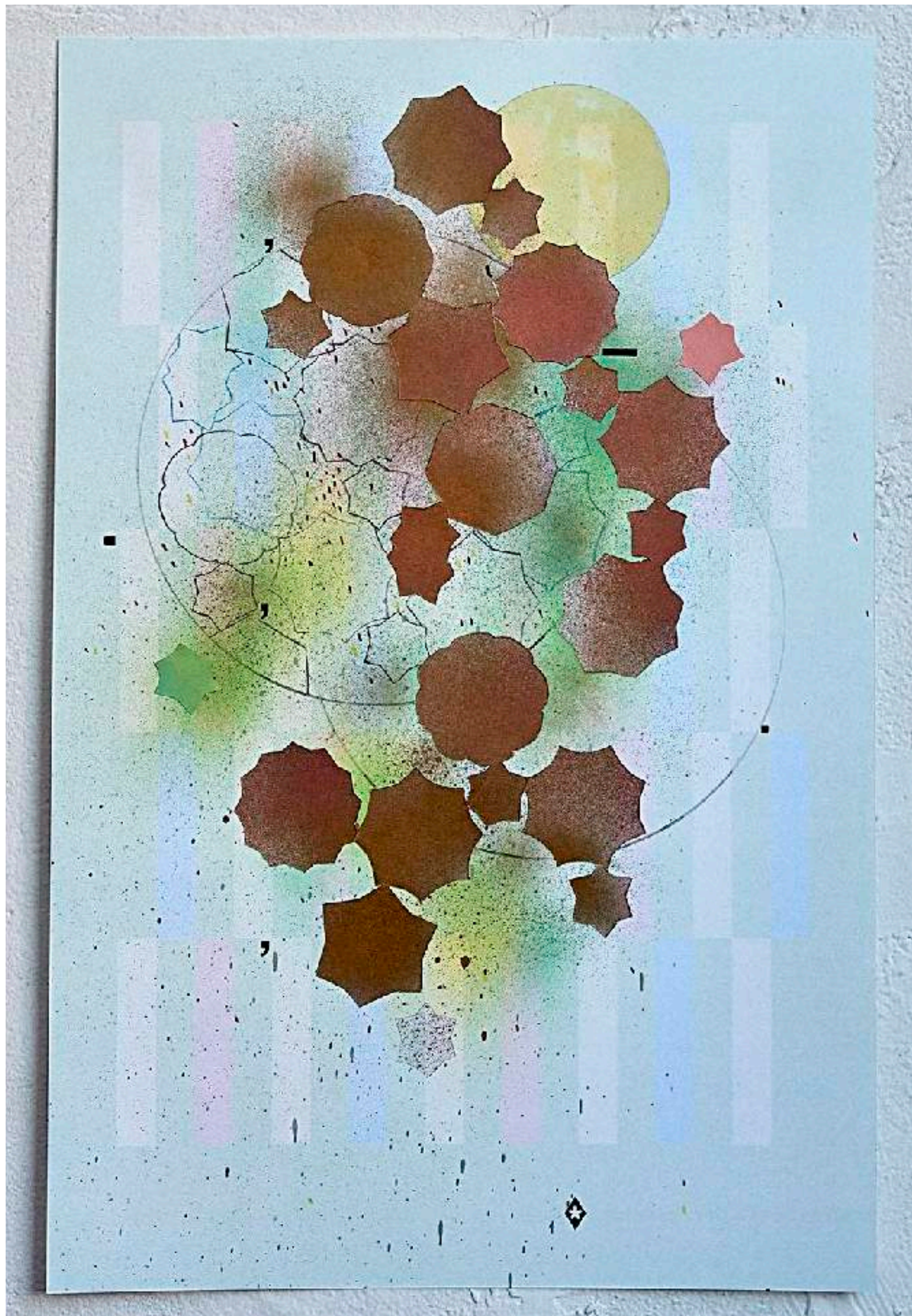




Adler Guerrier

Untitled (Field Guide--exposure to enchanted forms) vi (detail)





**Adler Guerrier**

Untitled (Field Guide--exposure to enchanted forms) vii

2022

Colored pencil, cut vinyl, enamel paint, and collage on a Xerox Versant 80 print on

Mohawk Superfine paper

18.5 x 12 inches



**Adler Guerrier**

Untitled, (Navigating errantly among liberatory forms and wander freely through Floridian groves;  
a gestural ode to JH) v

2022

Collage

19 x 15 inches



**Adler Guerrier**

Untitled, (Navigating errantly among liberatory forms and wander freely through Floridian groves; a gestural ode to JH) v. (detail)



**Adler Guerrier**

Untitled, (Navigating errantly among liberatory forms and wander freely through Floridian groves;  
a gestural ode to JH) vi

2022

Collage

19 x 15 inches



**LEVANI**  
(Levan Mindiashvili)

(b. Tbilisi, Georgia- based Brooklyn, NY)



you're  
just  
a dick  
on  
her way to  
power

**Levani** (Levan Mindiashvili)

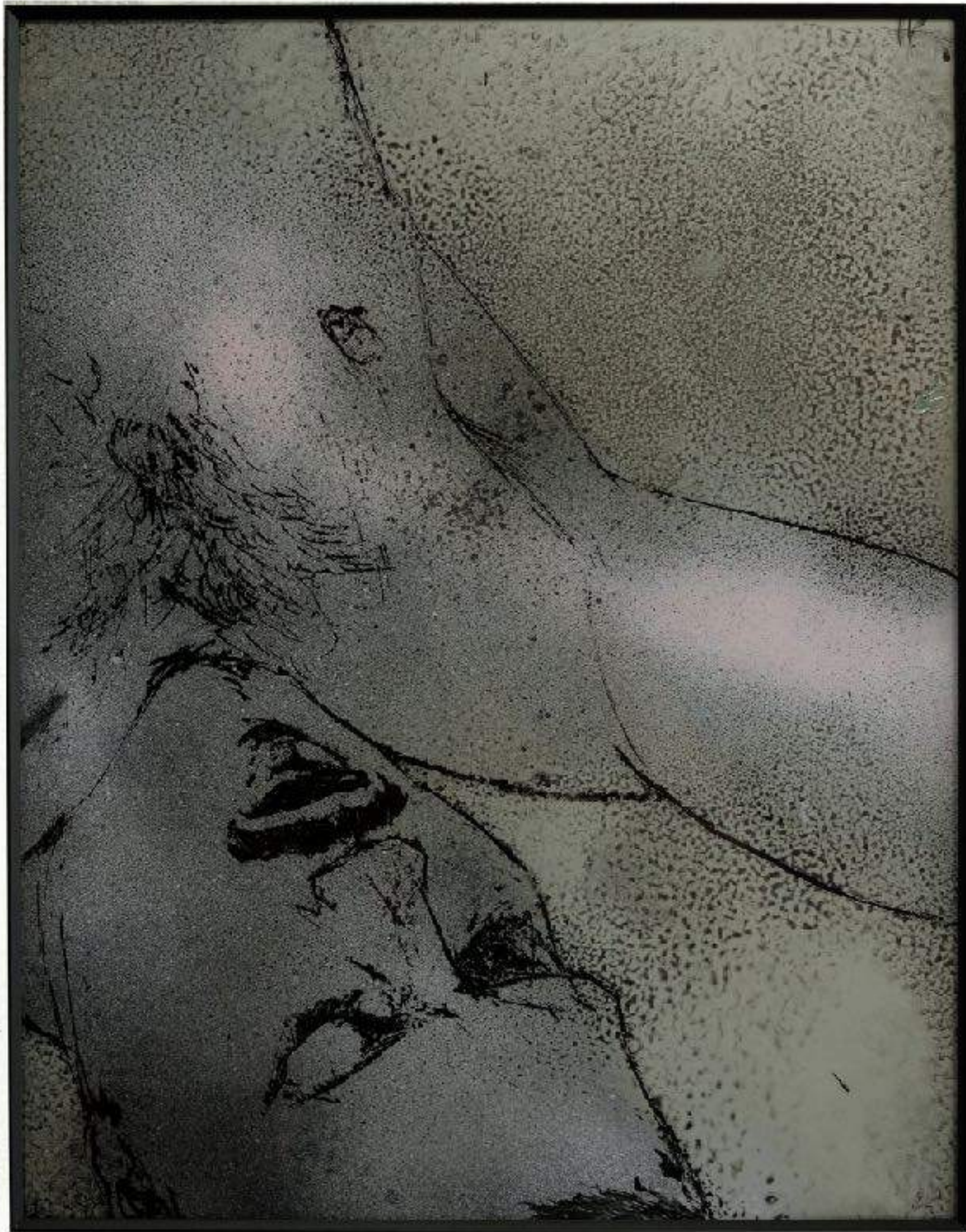
Thus Spoke Miss Jeeva

2022

Neon (edition of 5 + 2A/P)

46 x 28 inches

# MARISA NEWMAN PROJECTS



**Levani** (Levan Mindiashvili)

Study

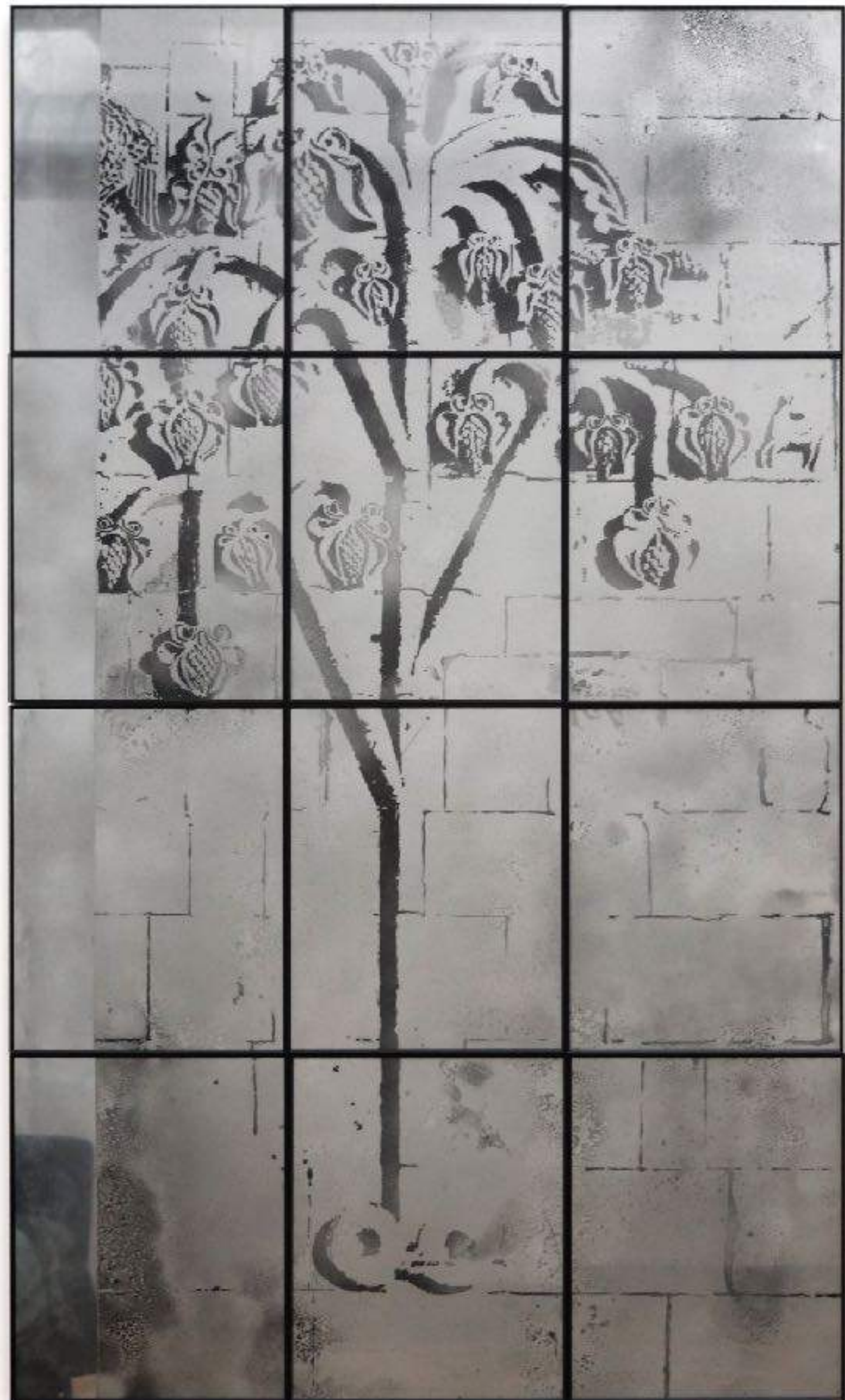
2022

Hand-painted liquid mirror and enamel on glass in aluminum frame

14 x 11 inches



# MARISA NEWMAN PROJECTS



**Levani** (Levan Mindiashvili)

The Eastern Wall (Gardens of Eurasia), Fig.2 & Fig.1

2021

Hand-painted liquid mirror and enamel on glass in aluminum frame, two parts

(Right) Fig.2: 14 x 11 inches, (Left) Fig.1: 56 x 33 inches

# MARISA NEWMAN PROJECTS



**Levani** (Levan Mindiashvili)

The Eastern Wall (Gardens of Eurasia), Fig.1

2021

Hand-painted liquid mirror and enamel on glass in aluminum frame

56 x 33 inches



Levani (Levan Mindiashvili)

The Eastern Wall (Gardens of Eurasia), Fig.1 (detail)



**Levani** (Levan Mindiashvili)

The Eastern Wall (Gardens of Eurasia), Fig.2

2021

Hand-painted liquid mirror and enamel on glass in aluminum frame

14 x 11 inches

# MARISA NEWMAN PROJECTS



**Levani** (Levan Mindiashvili)

Where the Pams Nest, No.1

2022

Two parts. Hand-painted liquid mirror and enamel on glass (Left), charcoal and color pencil on paper (Right), aluminum frame

14 x 12 inches (Left) 20 x 16 (Right)



**Levani** (Levan Mindiashvili)

Where the Pams Nest, No.1 (detail)

# MARISA NEWMAN PROJECTS



**Levani** (Levan Mindiashvili)

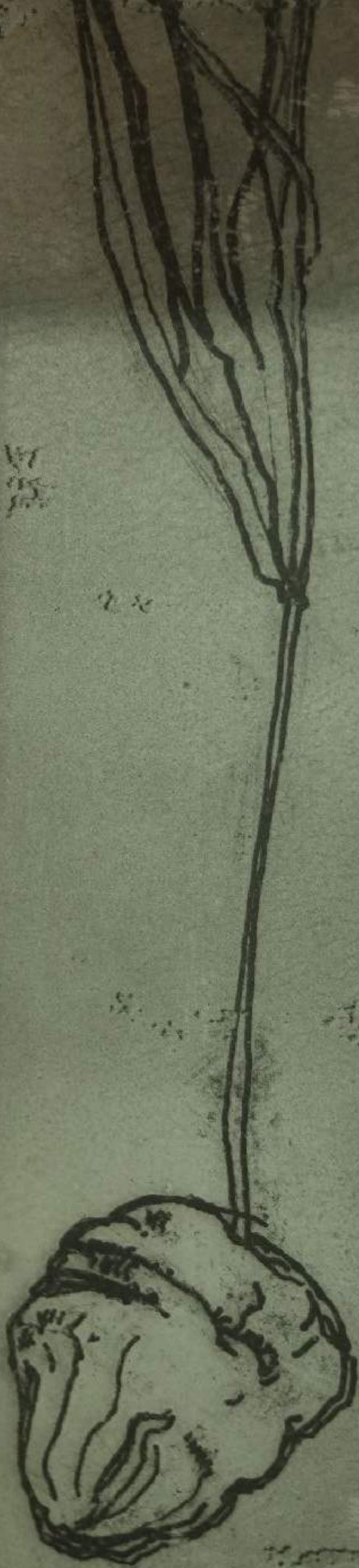
Where the Pams Nest, No.2

2022

Two parts. Hand-painted liquid mirror and enamel on glass (Left), charcoal and color pencil on paper (Right), aluminum frame

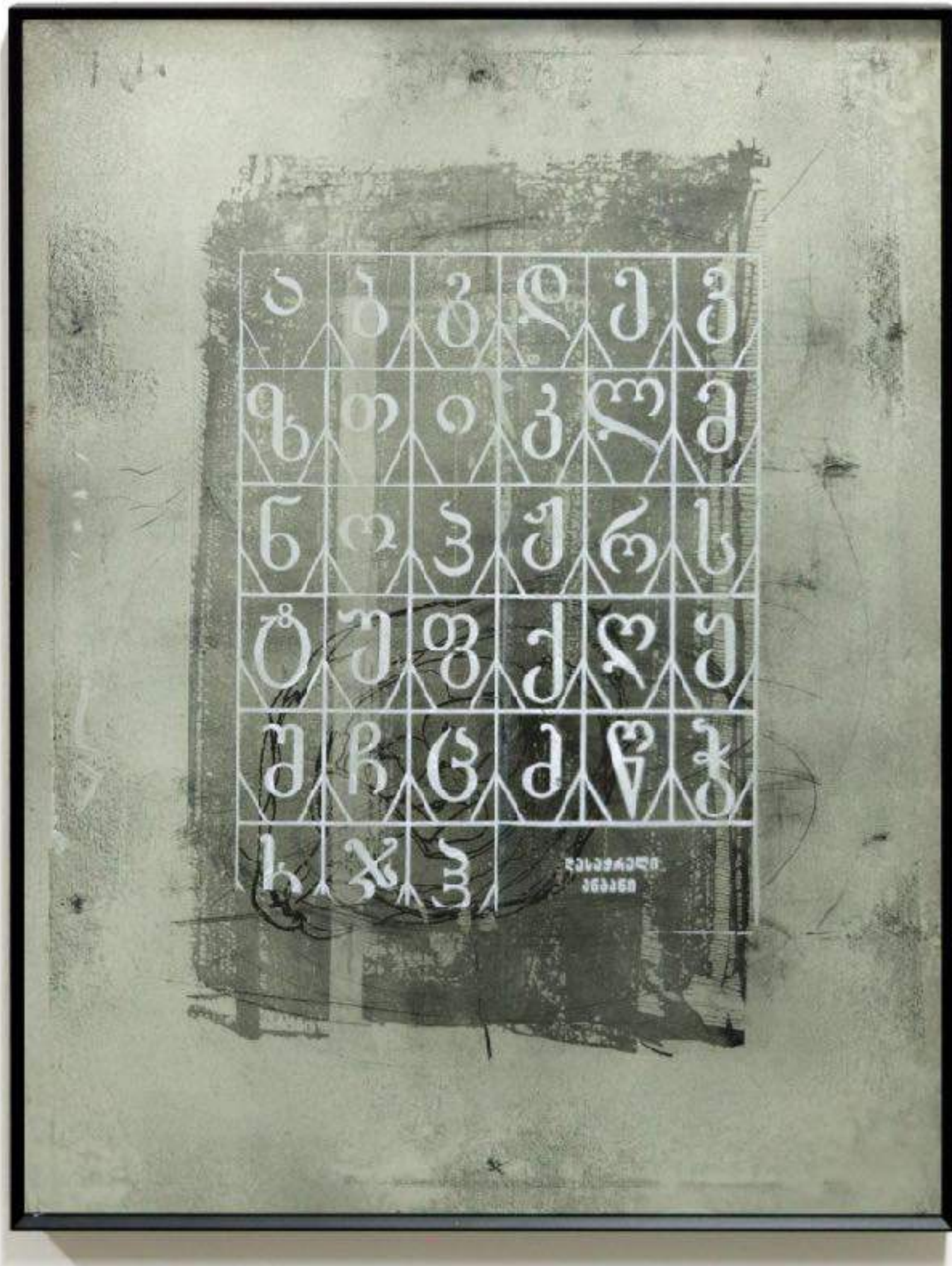
14 x 12 inches (Left) 20 x 16 (Right)

where the pams nest



Levani (Levan Mindiashvili)  
Where the Pams Nest, No.1 (detail)





**Levani** (Levan Mindiashvili)

Where the Palms Nest, No.3

2022

Hand-painted liquid mirror on glass and Georgian alphabet on iridescent latex in aluminum frame

14 x 12 inches



**Levani** (Levan Mindiashvili)

Where the Palms Nest, No.3

2022

Hand-painted liquid mirror on glass and Georgian alphabet on iridescent latex in aluminum frame

14 x 12 inches



SUSANA WALD

(b. Budapest, Hungary - based Oaxaca, Mexico)



**Susana Wald**

Emblemática de America

2010

Acrylic on canvas in artist's wood frame

23 x 17 inches



Susana Wald  
Emblemática de America (detail).

523



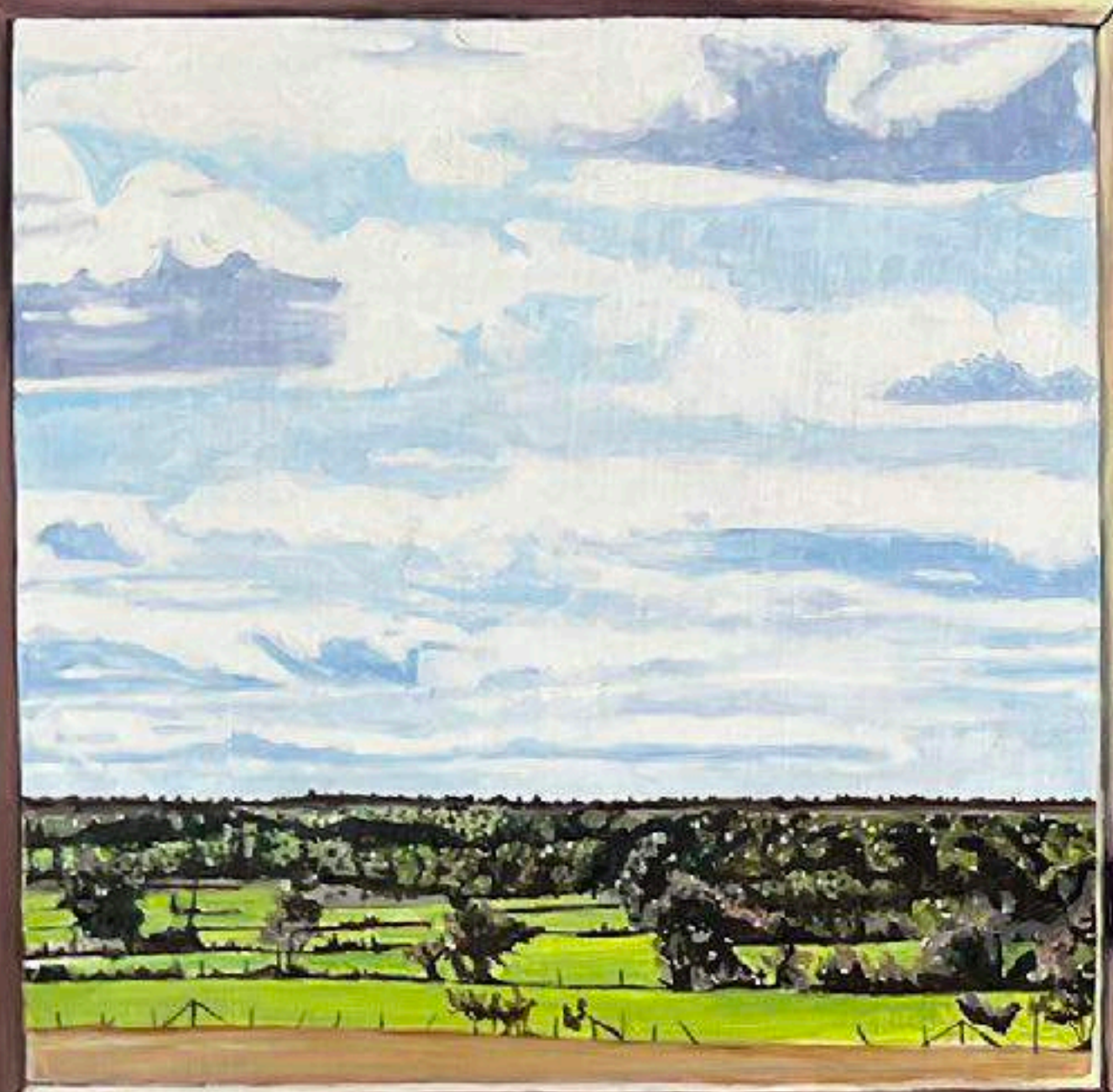
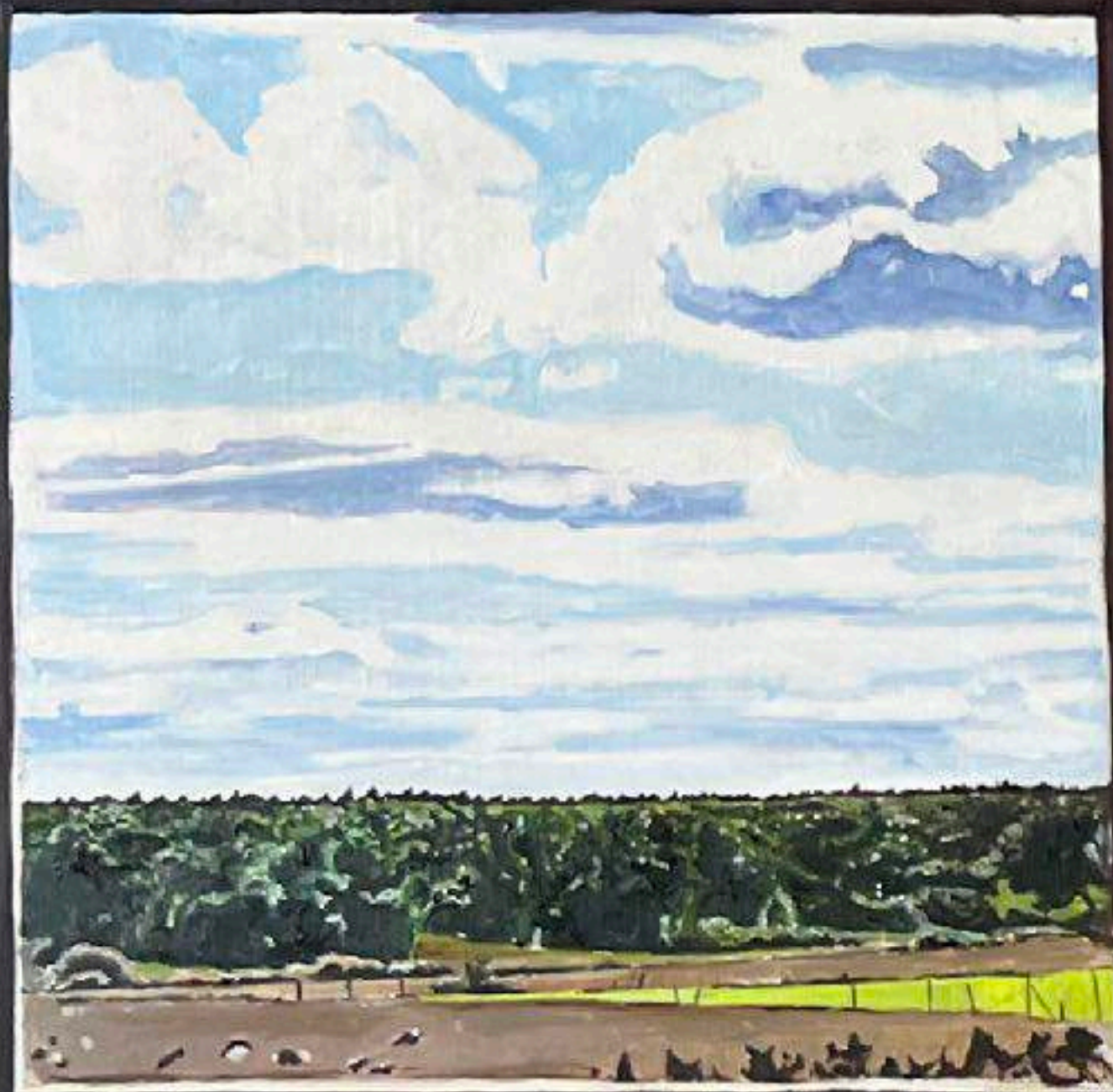
**Susana Wald**

Emblemática de Africa

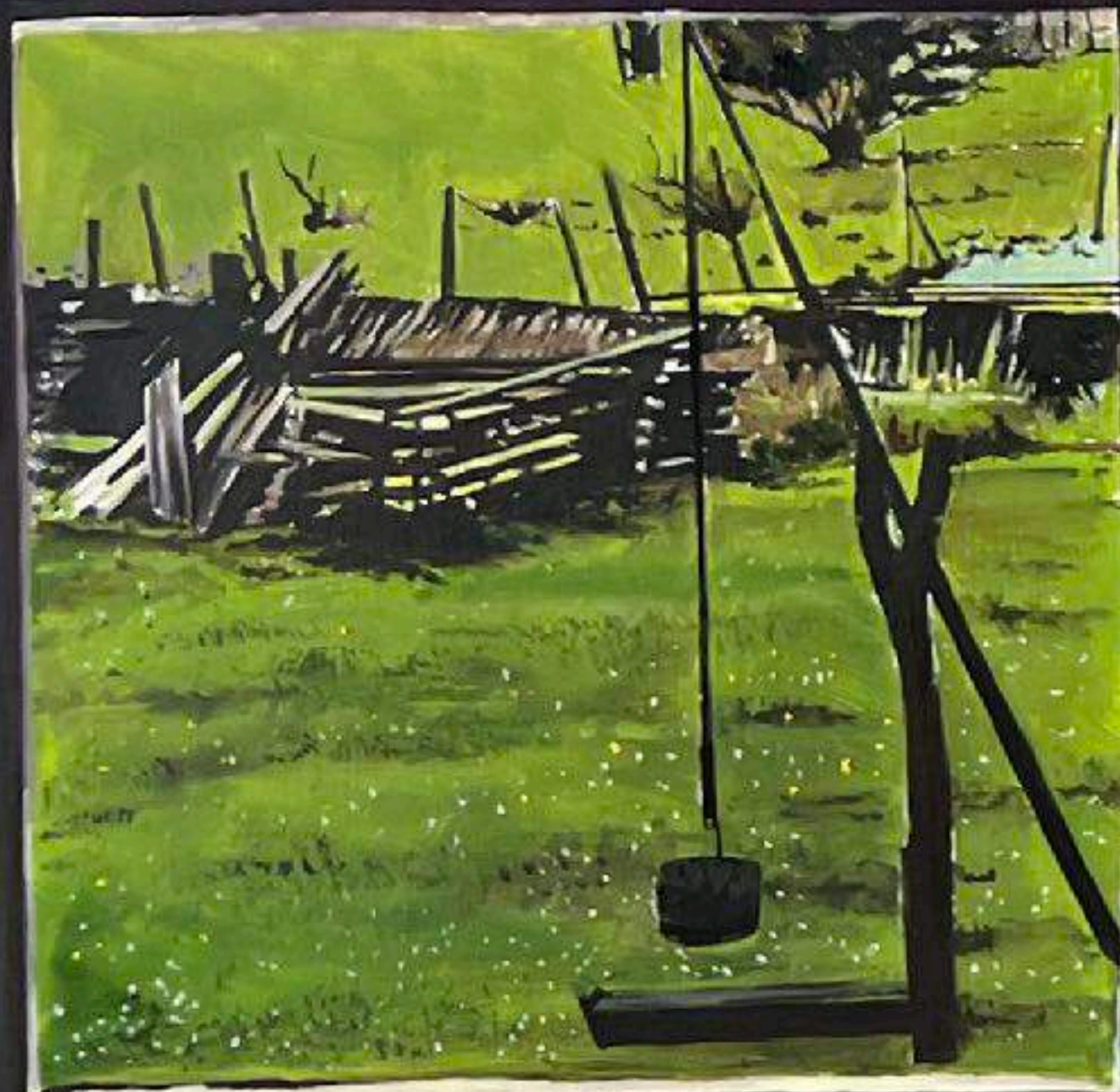
2010

Acrylic on canvas in artist's wood frame

23 x 17 inches



**CHARLOTTA WESTERGREN**



(b. Stockholm, Sweden - based Brooklyn, NY)

# MARISA NEWMAN PROJECTS



**Charlotta Westergren**

Vimmerby

2022

Oil on panel

24 x 36 inches



# MARISA NEWMAN PROJECTS



**Charlotta Westergren**

Green Interior

2022

Oil on canvas

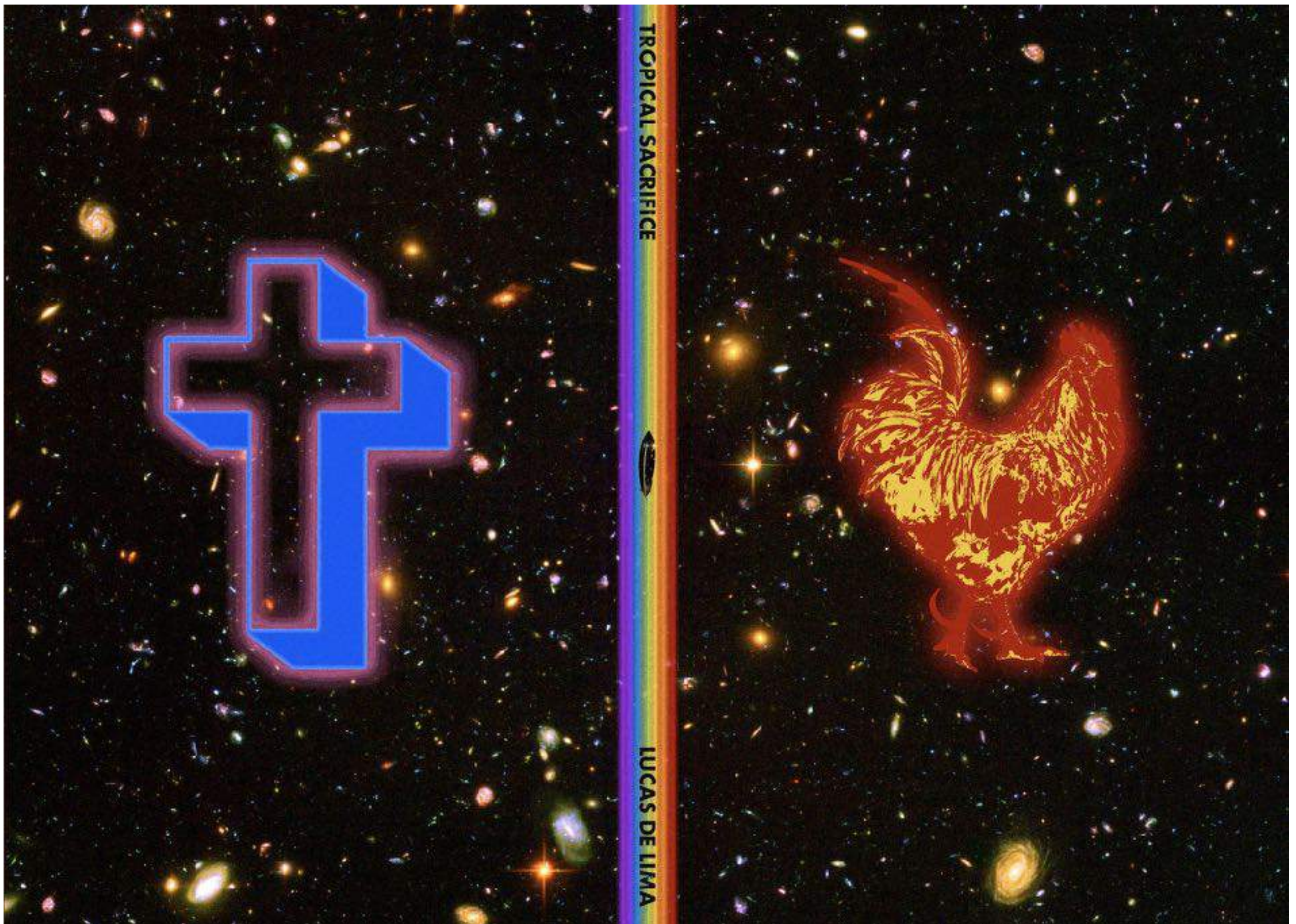
50 x 50 inches

A man stands in a field of autumn leaves, wearing a vibrant, multi-colored costume. The costume features a bright blue long-sleeved top with a large circular cutout and a black star on the chest. Below the top is a maroon skirt with gold and brown patterns. He wears a blue headband and a large, ornate headpiece with a prominent white and blue eye design. The background is a field of dry, brown leaves and a body of water, with some green leaves still visible. The lighting is warm, suggesting late afternoon or early morning.

**LUCAS DE LIMA**

(b. Brazil - based Brooklyn, NY)

# MARISA NEWMAN PROJECTS



**Lucas de Lima**

Tropical Sacrifice

2022

Poetry reading / Performance (approx. 30 min).

Costume by Uta Bekaia. Illustrations in the book by Levani (Levan Mindiashvili)

Friday, December 2, 5 PM.

# Untitled Art Miami Beach

November 28 - December 3, 2022

## MARISA NEWMAN PROJECTS

Booth A51

UTA BEKAIA  
KHATIA ESARTIA  
ADLER GUERRIER  
LEVANI (Levan Mindiashvili)  
SUSANA WALD  
CHARLOTTA WESTERGREN

Poetry Reading/Performance by  
Lucas de Lima

917.330.9393  
marisa@marisanewman.com  
www.marisanewman.com

### **VIP Preview**

Monday, November 28  
1pm - 8pm

### **Fair Dates**

Tuesday, November 29 - Saturday, December 3  
11am - 7pm